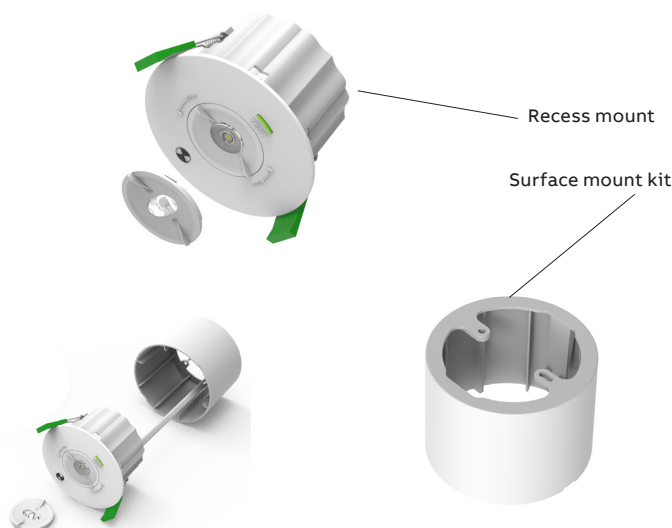


## PRODUCT DATA SHEET

# Spitfire LED non-maintained Self-test



| Catalogue no. | Description  |
|---------------|--|
| SFLEDSMST     | Spitfire recess LED emergency non-maintained, self test, LiFePO4 battery |
| Accessories   |  |
| SMK80         | Surface mount kit 80D  |
| RDIA170       | Ring Ø 170   |
| Spare parts   |  |
| 03-1C3233ST   | Battery pack LiFePO4 3.2V 3.3Ah  |

NOTE: Supplied recess mount as standard, accessories are available for purchase separately



**Range**  
Self-Test

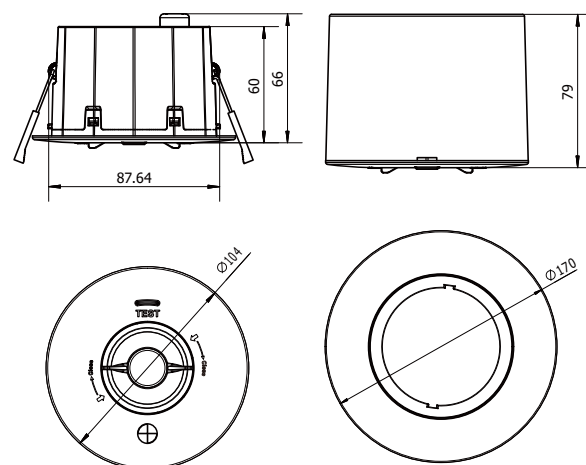


**Product group**  
Spitfire



### Features

- Interchangeable twist & lock lens for open area/corridor.
- Self-test automatically performs tests on itself to ensure that it will function correctly in the event of a mains failure.
- COB LED light source for reduced operation and maintenance costs
- Lithium iron phosphate battery for longer life
- Lightweight design for quick and easy installation
- Product comes complete with flex & plug.
- Self discharge test - every 6 months as per the Australian standard AS/NZS 2293.2
- Supplied standard as recess mount.
- Surface mounting kit available (sold separately), refer accessories.



| Dimensions    |             |
|---------------|-------------|
| Lamp head     | Ø104 x 66mm |
| Recess Cutout | Ø92mm       |

## Technical Data

|                             |   |
|-----------------------------|---|
| Product GID                 | 7TET000003R4054   |
| EAN                         | 9324652042043   |
| Input Voltage               | 220-240Vac  |
| Mains Frequency (Hz)        | 50/60   |
| Input Current               | 0.035A  |
| Inrush Current              | 20A   |
| Inrush Current Time tH50    | 58µs  |
| Earth Leakage               | 0.01mA  |
| Nominal Wattage             | 0.5W  |
| Maximum Wattage             | 2.4W  |
| Power Factor                | 0.5   |
| Protection Class            | II  |
| IP Rating                   | IP20  |
| IK Rating                   | IK02  |
| IC Rating                   | IC-4  |
| Ambient Temperature Range   | 10°C to 40°C (as per AS/NZS 2293.3 Appendix D)                |
| Electrical Connection       | Flex & plug   |
| Mounting Type               | Recessed/Surface  |
| Mounting Location           | Ceiling   |
| Application Environment     | Indoor  |
| Product Colour              | White   |
| Body Material               | Polycarbonate   |
| Body Colour                 | White   |
| Lamphead Material           | Polycarbonate   |
| Lamphead Colour             | White   |
| Lamphead cable length       | 320mm   |
| Dimensions (LxWxH) in mm    | Ø104x66mm, Big ring: Ø170mm, Mounting kit: Ø104x75mm          |
| Product Weight              | 0.5 Kg  |
| Operation Mode              | Non-maintained  |
| Test Mode                   | Selectable self-test/manual test via slide switch on PCBA     |
| LED Lifetime (L70)          | >50,000 hours   |
| Colour Temperature          | 6000K   |
| Colour Rendering Index      | 80  |
| Battery Technology          | Lithium Iron Phosphate (LiFePo4)                              |
| Nominal Voltage of Battery  | 3.2 V   |
| Nominal Capacity of Battery | 3300 mAh  |
| Battery Recharging Time     | ≤ 16 hours  |
| Emergency Duration          | 90 min. in service, 120 min. initial commissioning test       |
| Emergency Output Power      | 2W  |
| Photometric                 | C0: D63, C90: D63   |
| Compliance                  | AS/NZS 60598.1, AS 60598.2.22, AS/NZS CISPR 15, AS/NZS 2293.3 |